



The product is installed in these energy transmission lines:

Festoon System Line 30

Please find the relevant reference guides on our instruction manuals page:

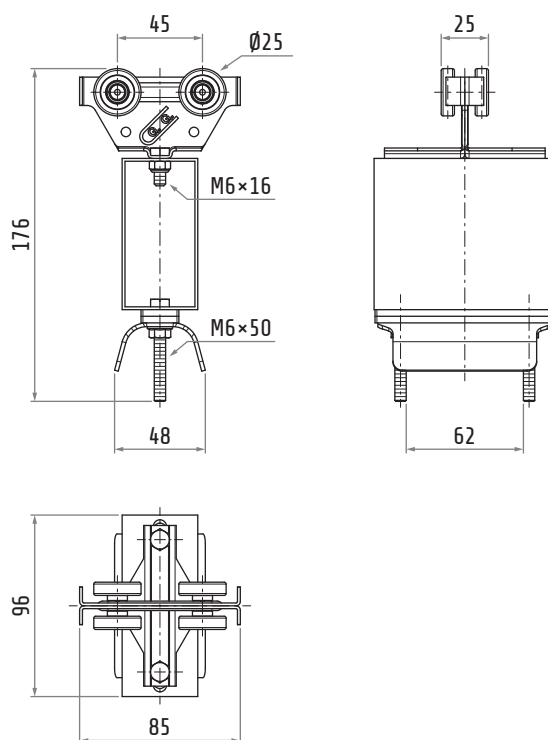
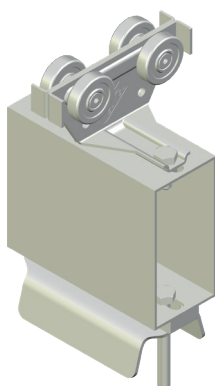
<https://www.giovenzana.com/leaflets/>

INSTRUCTION  
MANUALS



# 30607007

## TOWING TROLLEY FOR FLAT CABLE



Material	body hardware rollers	galvanized steel galvanized steel covered ball bearings
Weight		~610 g
Saddle		68 mm
Excursion		30 mm