



The product is installed in these energy transmission lines:

Festoon System    Line 30

Please find the relevant reference guides on our instruction manuals page:

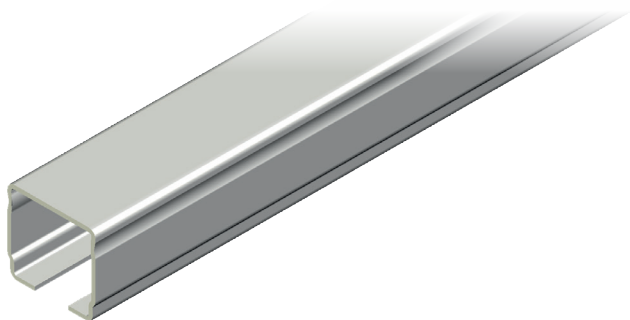
<https://www.giovenzana.com/leaflets/>

INSTRUCTION  
MANUALS



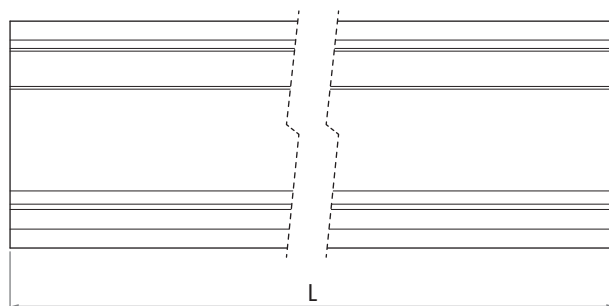
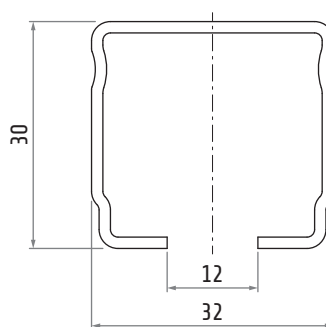
# 30607001

## C-RAIL BAR



Material		galvanized steel
Standard length	L	4 m
Thickness		1.5 mm
Weight		~1.18 kg/m (~4.8 kg)

Standard 90° curves	30607031	30607030
Radius	1200 mm	1500 mm
Weight	~2.25 kg	~2.78 kg



Custom curved bars available on request  
(minimum radius 1200 mm)