



The product is installed in these energy transmission lines:

Festoon System Line 30

Please find the relevant reference guides on our instruction manuals page:

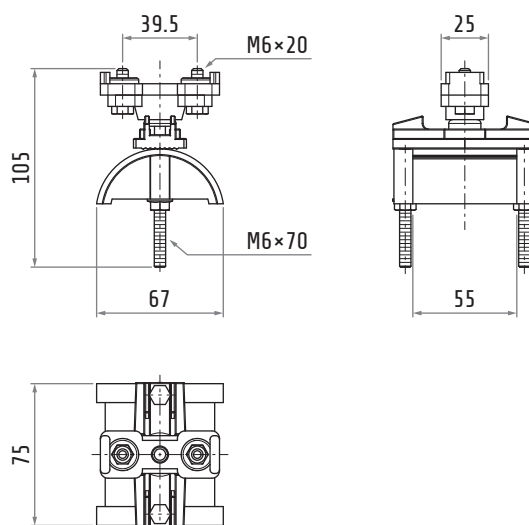
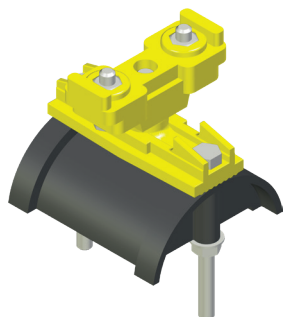
<https://www.giovenzana.com/leaflets/>

INSTRUCTION  
MANUALS



# 30607020

## HEAD CLAMP



Material	body hardware	nylon galvanized steel
Weight		~145 g
Saddle		55 mm
Excursion		30 mm